

GD **60Hz**
SERIES

SUBMERSIBLE PORTABLE
DEWATERING / RESIDUAL PUMPS



GD-400/750

GD-1100

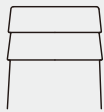
Available with Hose Kit

GD SUBMERSIBLE PORTABLE DEWATERING PUMPS

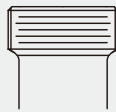
FEATURES

- Lightweight, portability and durability, aluminum motor frame and seal bracket, water-cooling motor, exchangeable vertical and horizontal discharges that provides adaptability and flexibility in installations.
- Excellent for confined spaces, 8 inch narrow wells or shallow water.
- With matching claw distances, these fittings quickly interlock and tighten, effectively preventing leaks and facilitating swift responses to emergency dewatering.
- GD-400(R)/750(R) Urethane rubber impeller wear-resistance for construction dewatering applications.
- GD-400/750 optional: built-in ON/OFF floating (F) or vertical floating (FV) for automatic pump down and pump applications.
- The GD-1100 motor frame features a sturdy 3.2mm iron plate thickness, enhancing its impact resistance and minimizing the risk of deformation.
- GD-1100's mechanical seal bracket is covered with the EPDM rubber, known for its abrasion resistance, ensuring extended durability.

Available with two type outlet connections :



LOH 2" hose outlet



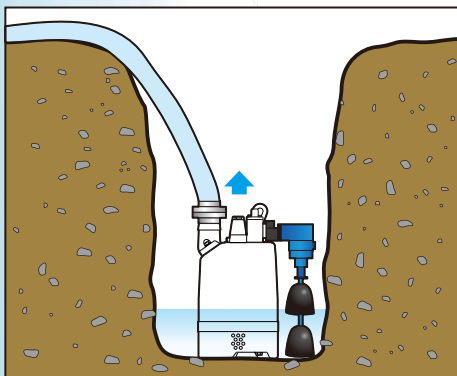
LOT 2" male thread outlet (PF/NPT)



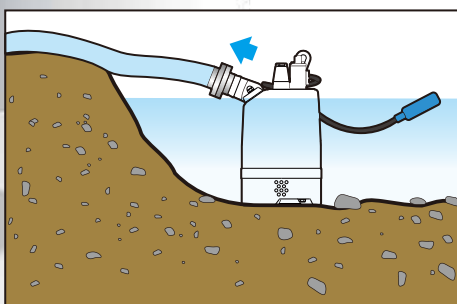
GD-400(R)/750(R)
Urethane rubber



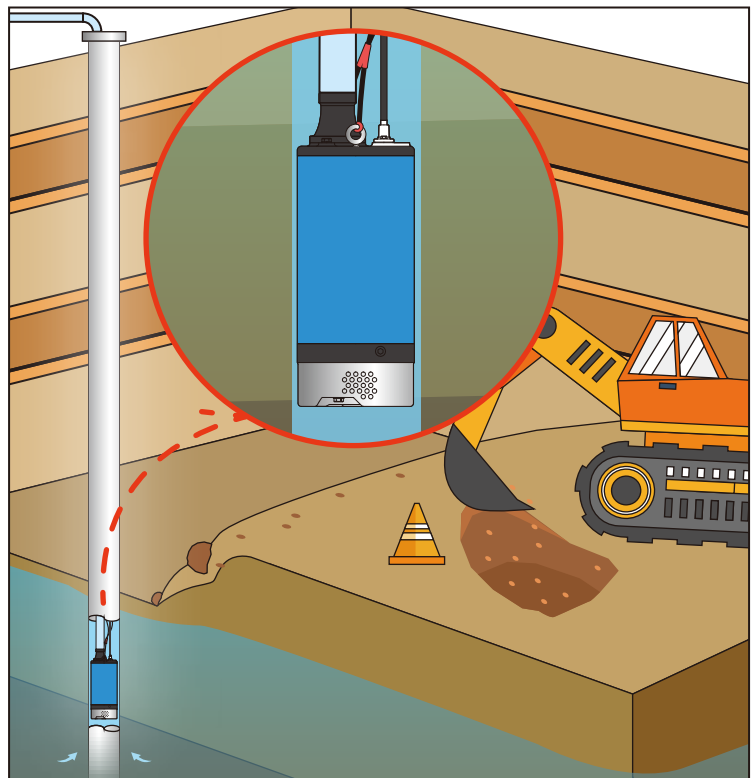
GD-1100
Chrome steel



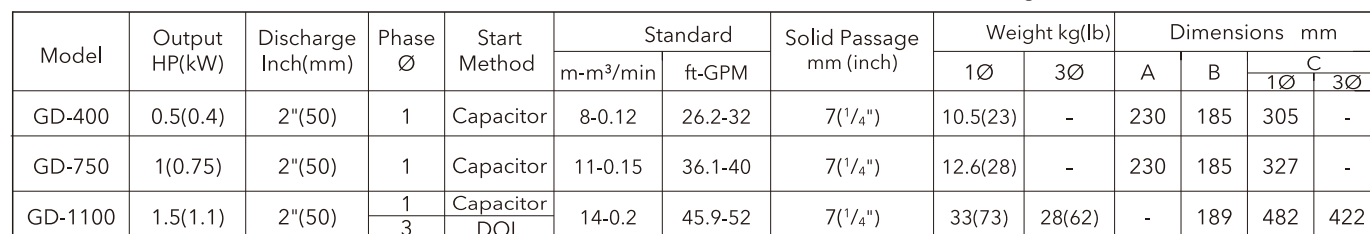
Application in a pit and confined space - Vertical orientation discharge and vertical floating switch.

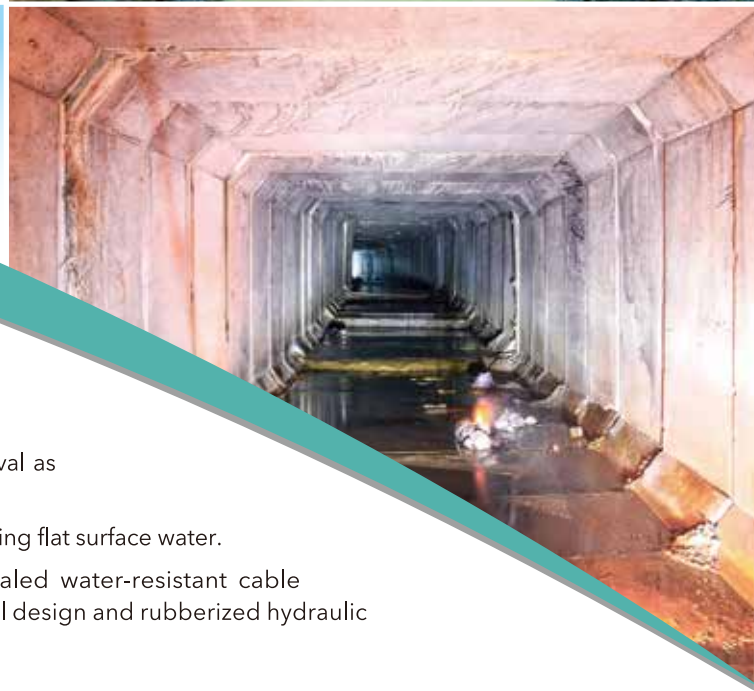
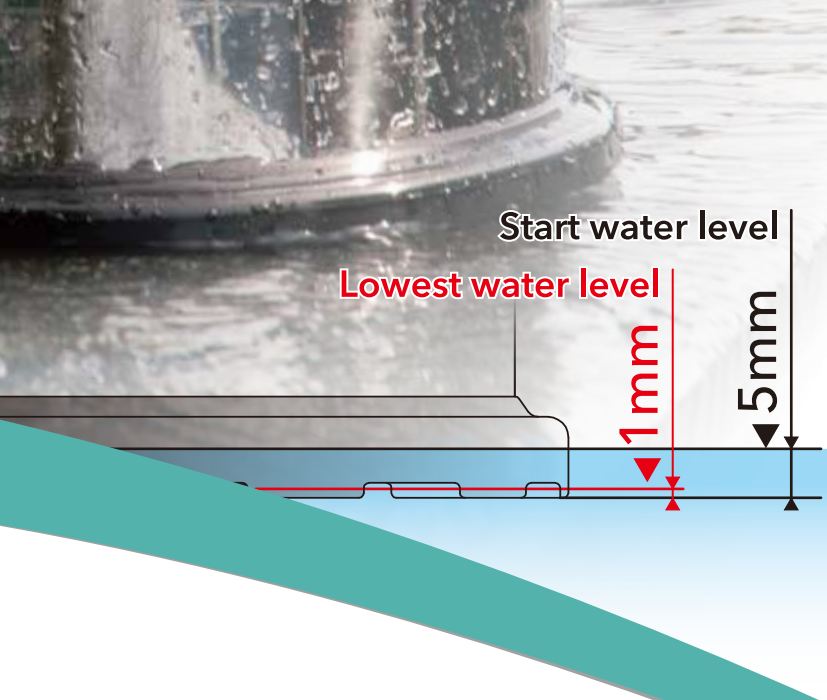


Application in shallow water - Horizontal orientation discharge and floating switch.



GD-1100 pump can be placed inside the well (diameter 8") for construction dewatering.



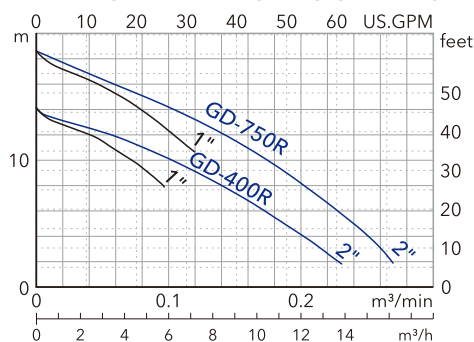


GD-R

SUBMERSIBLE RESIDUAL PUMPS

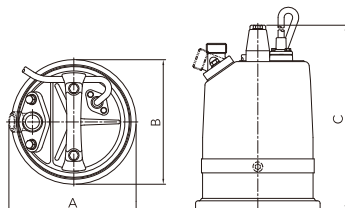
- Water cooling motor with rubber suction pads for residual removal as low as 1 mm (0.39"). Start up at water level of 5 mm.
- Portable and lightweight, GD-R Series is excellent pump for removing flat surface water.
- Standard accessories include: cable with an epoxy resin sealed water-resistant cable base, Auto-cut motor protector, double mechanical seals, lip seal design and rubberized hydraulic components to withstand any tough applications.
- Standard Outlet Discharge: 1" LOT 1-74 (Optional 2" LOT 2-74)

PERFORMANCE CURVES



APPLICATIONS

- Basement / Pool / Pond water removal.
- Residential, Commercial residue dewatering.



GD-400R/750R

Scan for more detail



Available with Hose Kit

PERFORMANCE SPECS.

Note: Weight Not Included Cable & Outlet Set.

Model	Output HP(kW)	Discharge Inch(mm)	Phase Ø	Start Method	Standard		Weight kg (lb)	Dimensions mm		
					m-m³/min	ft-GPM		A	B	C
GD-400R	0.5(0.4)	1"(25)	1	Capacitor	10.5-0.06	34.5-16	11.8 (26)	209	205	304
		2"(50)	1	Capacitor	9-0.12	29.5-32	11.8 (26)	240	205	304
GD-750R	1(0.75)	1"(25)	1	Capacitor	13.5-0.08	44.3-21	14(31)	209	205	326
		2"(50)	1	Capacitor	11.5-0.15	37.7-40	14(31)	240	205	326



Professionalism • Innovation • Service • Commitment
HCP PUMP MANUFACTURER CO., LTD.
www.hcnpump.com



Distributor: